



DataSheet

Outpost Security Suite Pro 2009

Proactive Protection for Intelligent Internet Users

Why Proactive Protection?

Today's Internet requires a whole new approach to security. Almost everything is interconnected and taking place in real time. And that includes the threats. Effective security software must be alert at all times for new, ever-more devious malware.

New types of threats require new types of protection. Mass-distribution viruses and worms are giving way to profit-driven attacks designed to steal identities, money, and other valuable electronic commodities through phishing and social engineering.

To fully protect against these new risks, an effective security solution must deploy a multi-layered approach, providing proactive, behavior-based blocking as well as the more traditional database-driven signature detection. It must also be easy to use – because if it's not, it won't *be* used.

Agnitum Outpost Security Suite Pro combines the best of both approaches in a single integrated product that delivers customizable protection and total reliability. Outpost Security Suite Pro is on guard, protecting data 24 hours a day, seven days a week – no matter what activities are being undertaken on the PC.



The screenshot shows the Outpost Security Suite Pro 2009 interface. The window title is "Outpost Security Suite Pro 2009". The main menu includes "My Security", "Firewall", "Host Protection", "Anti-Malware", "Web Control", "Anti-Spam", and "Event Viewer". The "Firewall" section is active, showing a status table and a "Security Teacher" tip.

Component	Status
Firewall policy	Rules Wizard ●
Self-protection	Enabled ●
Host protection level	Optimal ●
Real-time malware protection	Enabled ●
Malware database	6/28/2008 ●
License	Trial, 30 days left Purchase... ●

Version: 6.5.2351.314.0591
Trial version

Security Teacher - Internet security tips and advices
Security tips and guidelines as well as topical security articles for everyone who cares about protected web-life.
[click here to learn more →](#)

Need help? Contact Agnitum Technical support service
Vulnerable? Test your PC online

Switch to Simple View

Firewall: Rules Wizard

Key Technologies

- **Two-way firewall** to guard network access
- **Intrusion Detection System (IDS) and Ethernet protection** for automated defense against vulnerability probes and internal breaches
- **Combined anti-virus and anti-spyware scanner** for all-in-one malware defense
- **Host protection** for proactively blocking unknown threats
- **Anti-spam** to keep the inbox clean of junk emails
- **Web & transaction security** to protect against web-borne risks
- **Self-protection** to maintain continuity of protection
- **Automated, updatable configurations** to simplify work

Key Benefits

- The award-winning firewall keeps hackers and malware away, so users can feel safe when they're online. The two-way access control means that unauthorized network activity is impossible, and special Ethernet protection shields local networks against man-in-the middle attacks and WiFi-borne intrusions. The IP Blocklist component will block connectivity to predefined Internet hosts, keeping your family members away from the sites that you consider inappropriate.
- Host protection monitors program behavior and interactions to proactively defend against unauthorized activity, stopping Trojans, rootkits and keyloggers in their tracks without the need to scan each suspicious object for known malware. Outpost's Host Protection achieved a 100% pass rate for all current leaktests, providing reliable protection against unknown and/or sophisticated hacker attacks.
- The lightweight, highly effective scanning engine combines award-winning anti-virus and anti-spyware to detect and disinfect or remove malicious programs automatically. The on-access monitor is constantly on guard against malware attempting to enter or activate on the PC, and the flexible architecture ensures high-speed, low-resource scanning.
- The versatile Web Control module safeguards users' browsing activities against the Internet's darker side by steering away from websites infected with drive-by downloads, preventing the inadvertent disclosure of personal information, limiting exposure to potentially unsafe web properties, and keeping identity private.
- Self-learning anti-spam keeps the inbox clean of junk mails – and it gets better over time as it learns to recognize what the user classifies as unwanted email.
- Outpost's self-protection capability ensures that it cannot be deactivated by targeted attacks, ensuring uninterrupted protection.
- Thanks to advanced events logging mechanism and new process activity view that shows detailed information about all currently active programs, users get the ultimate in transparent, hands-on protection.

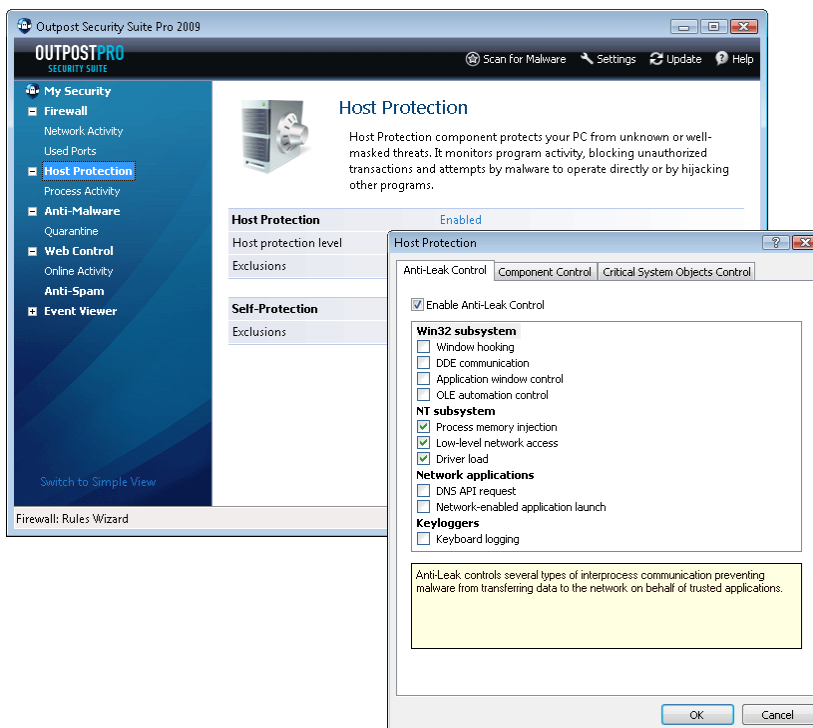
Outpost Security Suite Pro has been designed to meet the needs of users who understand the need for robust, efficient security. While it provides great protection "out of the box" for users at all levels of experience, Outpost Security Suite Pro also includes an extensive array of customizable settings and options for advanced users to tweak and personalize their protection. Less-experienced users also get great protection because Outpost lets them define and apply most settings automatically, eliminating potential configuration errors. The intuitive interface and accessible controls ensure ease of use for everyone.

Key Features

Proactive security

Preemptive threat protection

Outpost Security Suite Pro provides the first line of defense against malicious software by proactively controlling how programs behave and interact on a PC and preventing security breaches. The Host Protection module proactively monitors for and blocks sophisticated hacking techniques used to compromise or steal data. By analyzing threats and displaying actionable alerts, it blocks zero-day attacks and other unauthorized activities, providing advanced protection against botnets, rootkits and inadvertent data disclosure. This latest version extends the range of monitored events and operations for even greater and more customizable protection. Outpost excels in all currently-known leaktests, with additional focus on keylogger-like activities.



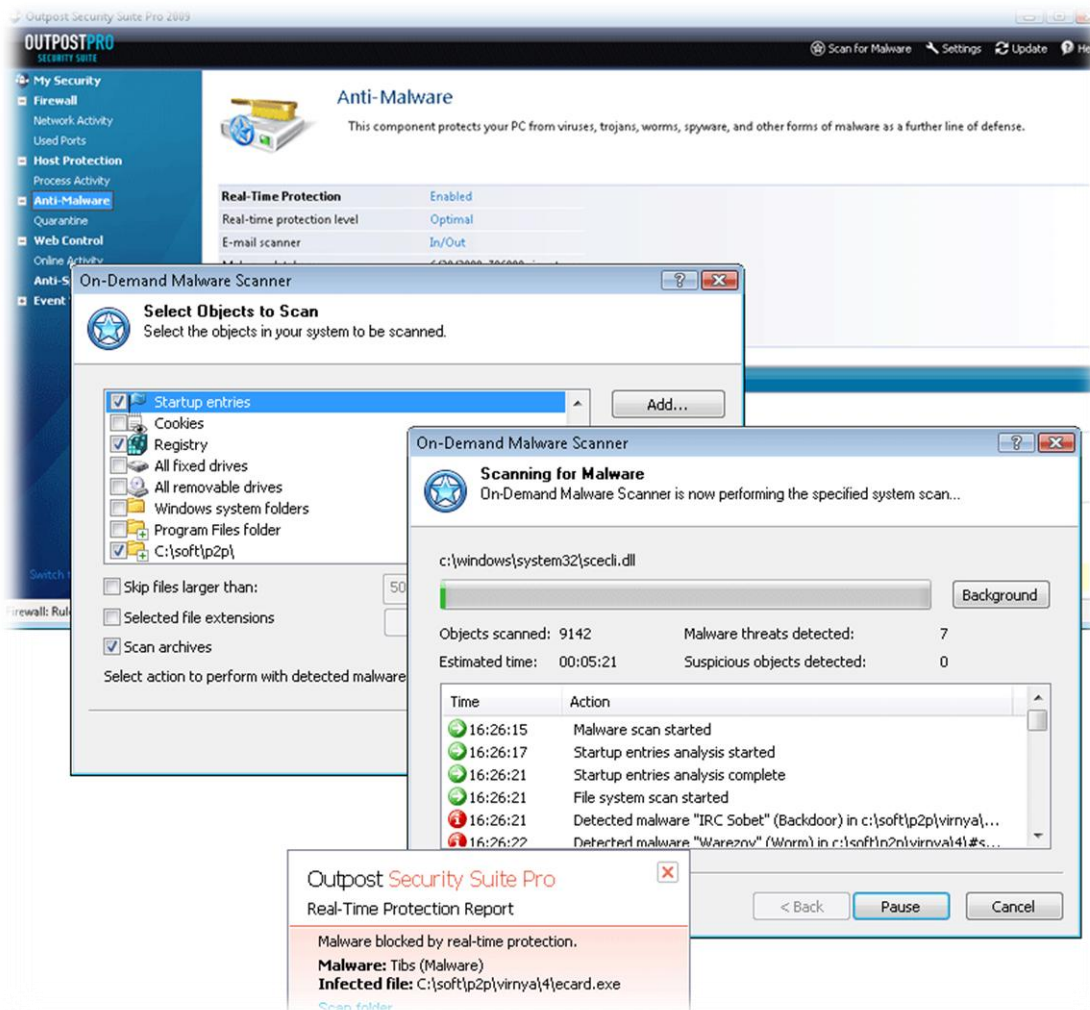
Self-protection

Today's malware frequently seeks to shut down security software to make its infection process easier. By incorporating solid tamper-proof protection for all its components, Outpost Security Suite Pro makes it impossible for anyone except the authorized user of the program to disable or close active protection.

Efficient anti-malware

360-degree malware defense

Both anti-virus and anti-spyware capabilities are provided through the universal anti-malware module, which ensures that computers are kept clean of any malicious program that might attempt to infect while the user is online. The on-access monitor constantly watches for and instantly disinfects, quarantines or removes any malware objects found in key areas of the PC, while the on-demand scanner lets users scan for and remove threats on hard disks, network folders, DVDs, or external storage devices. Email attachments are checked in real time as they leave or arrive, and users can move any suspicious file to the quarantine area for later review. Additional protection now prevents known rootkits and other sophisticated malware from loading and embedding themselves on the PC.



Scheduled scans and exclusions

Users can set up a flexible schedule for regular malware scans, plus define custom scanning criteria such as checking critical system areas whenever malware definitions have been updated.

Network security & continuity

Connection security

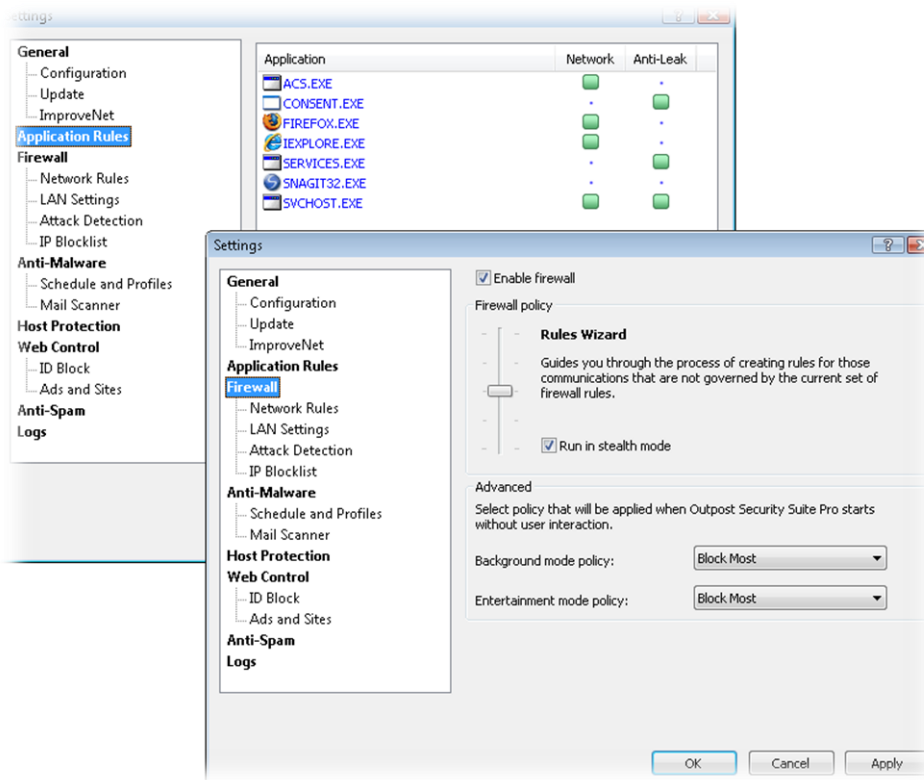
The two-way firewall monitors the computer's inbound and outbound connections and prevents local and remote unauthorized network access. It conceals access ports, making the user's presence on the Internet invisible. The Ethernet Protection module guards network connections and prevents insider attacks by controlling the transmission of data over the network. This eliminates the potential risk for data such as chat windows or authenticated browser sessions to be delivered to the wrong destination or intercepted while in transit.

Application access control

The firewall controls which programs are allowed to access the Internet, proactively protecting the PC against both zero-day threats and malware attempts to "phone home".

Comprehensive coverage

Outpost Security Suite Pro secures all types of connections (Ethernet, WiFi, DSL, cable, cellular, and dial-up), automatically applying the necessary security settings when the computer is connected to a new provider.



Intrusion protection

The Attack Detection module automatically blocks known types of hacker attacks from gaining access to the computer.

Privacy & web safety

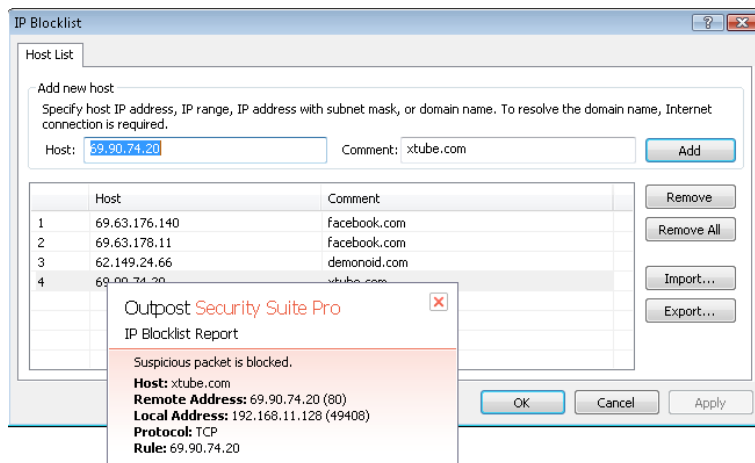
Protection from spam

Outpost Security Suite Pro's Bayesian anti-spam engine will keep inboxes free of junk email. Users can train it to recognize and use their personal definition of spam, so it becomes more efficient and an even greater time saver the longer it is used. Outpost's antispam now features full support for the popular The Bat! email client.

IP Blocklist keeps surfing clean

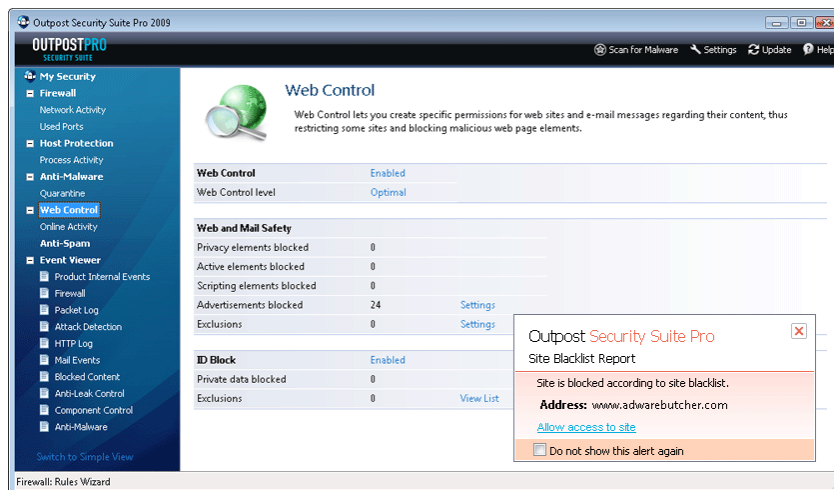
Based on the BlockPost plug-in in earlier Outpost versions, the integrated IP Blocklist lets users restrict access to specified Internet domains. A valuable tool for both sensitive individuals and concerned parents, IP Blocklist will deny incoming/outgoing connectivity to ill-intent Internet zones, such as those distributing spyware or delivering obnoxious ads and graphics spam.

The blocked entries can either be manually defined or imported as an aggregated list from community-maintained sources.



Unsafe web site access restriction

Outpost can optionally alert and block access to potentially malicious or unwanted web sites based on a predefined list of URLs. This filtering ensures users won't become a victim of inadvertent drive-by malware infection or phishing attacks that are looking to steal passwords, login information and other sensitive data. The list of blocked sites is updated via the automatic updates and can be edited to reflect individual preferences.



Safe repository for personal data

Any confidential information – for example, bank account numbers and passwords – that users define using ID Block is blocked from leaving the confines of the PC through communication channels such as IM, web or email. ID Block protects against identity theft and phishing attacks that target personal, confidential information. Plus, it ensures that no-one else – including other members of the household – can accidentally or deliberately disclose this information on the web.

Ad-free, anonymous surfing

By managing cookies and external referral URLs, Outpost lets users maintain a high level of privacy when visiting shopping, entertainment or news sites while at the same time allowing trusted sites to collect only the information needed to personalize pages. Additionally, Outpost Security Suite Pro lets users limit the elements displayed on web pages, providing cleaner and faster browsing. Users can also define the sites that are permitted (or not permitted) to display images, rotate advertising banners, execute external code such as ActiveX or Java scripts, or deliver pop-ups. The latest version of Outpost ensures compatibility with even the most complex and sophisticated websites, delivering smooth performance and heightened online safety.

Tracking & control

Network activity monitoring

Outpost's Network Activity Monitor shows every connection the user's PC makes with other computers on the Internet or local network, so users can see what's happening on their PC at all times and quickly close down any unauthorized connections. In the new 2009 version, connections can be grouped/ungrouped according to application, and you can quickly edit any existing rules right from the interface.

Password-protection, multiple configuration profiles

Users can set passwords to protect their configurations from accidental or deliberate modification, as well as create and use multiple configuration profiles to suit their current risk exposure. For advanced users, the ability to construct multiple restore points through the save/load configuration command is a big plus.

Better manageable events logs

Outpost's old Log Viewer showed the history of past events on a computer. The new version improves on the Log Viewer's clarity and manageability, adding support for per-category listings that can be sorted and filtered according to different user-specified criteria.

Compatibility

Driver certification and latest Windows platforms compatibility

Outpost has received WHQL (Windows Hardware Quality Labs) certification, meaning that its protection complies with Microsoft's stringent quality, compatibility and stability requirements.

Adaptive firewall rules

When traveling with a laptop, or changing ISP, users don't need to manually adjust their security for new connection settings - Outpost handles it automatically by designating connection-specific parameters such as DNS or gateway server addresses as environment variables.

Entertainment mode for uninterrupted gameplay and video viewing

While users play full-screen games or watch videos on their PC, Outpost's Entertainment Mode ensures the program won't interrupt with alerts if it detects new activity. New activity notifications are handled in the background without sacrificing current protection levels. Users can customize which applications will automatically trigger the switch to Entertainment Mode.



Convenience and ease of use

Auto-learning mode

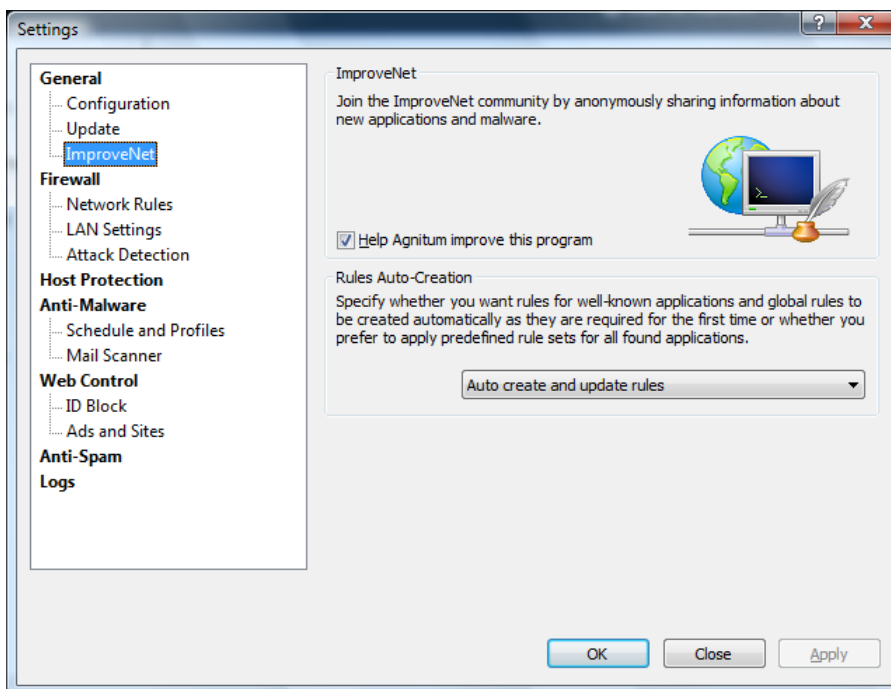
When Outpost is first started, it runs in a special "learning mode" where all alert notifications are suppressed. During this time, the program is silently learning the user's typical program activity and firewall-monitored connections. After the learning period is over, the Suite reverts to normal mode, and will prompt for a response only when new activity is seen, dramatically reducing the number of alerts requiring your involvement.

Automatic configuration

Rules for most programs that access the Internet are applied automatically, relieving users of the need to enter rules manually every time a new application accesses the Internet or interacts with another program. This means that for most of the time, users won't need to deal with questions relating to Internet access, minimizing interruptions and risk exposure due to insecure configurations. Outpost includes a wide range of predefined access policies; these settings can be customized to meet individual requirements at any time.

ImproveNet delivers more ready-made configurations

ImproveNet is a voluntary system of program configuration aggregation and distribution. After being reviewed and approved by Agnitum engineers, rulesets submitted by Outpost users are distributed across the user base, providing all users with the most secure and up-to-date rules for a wide range of activities and applications.



Smartadvisor - instant, context-sensitive help

If ImproveNet doesn't have the answer, SmartAdvisor is always on hand to help users make the right decision when configuring access information for an application.

Hands-free updates

Whenever an update to Outpost Security Suite Pro is released during the license period, the update module automatically retrieves the latest version from the Agnitum server and applies it as soon as it is authorized to do so.

Performance & optimization

Faster, more intelligent scans

SmartScan, the intelligent file sensing monitor, scans only the modified portions of the file system, avoiding repeat scans of files that have not changed since the last scan. The fast and intelligent anti-malware engine has no impact on overall system performance and can operate in the background while you work. SmartScan has been further optimized to deliver up to ten times faster performance boost for some scan and datastream data checking operations.

Specifications

Supported platforms: 32- and 64-bit Windows (Vista, XP, Server 2003, 2008), Windows 2000 (SP3 and above).

Supported email clients for anti-spam: The Bat!, Windows Mail, Outlook Express, Outlook (all versions).

Supported email protocols & services: POP3, SMTP, IMAP.

Min. hardware requirements: 450 MHz CPU(x-86/x-64/multi-core), 256Mb RAM, 100MB free disk space.