

Technical  
Reference

# Outpost Office Firewall

Office Firewall Software  
from  
**Agnitum**

# Abstract

This document provides advanced technical information on administering Outpost Office Firewall in a corporate network. It is meant for those administrators who want detailed control of the product.

For information on deploying Outpost Office Firewall, please see the [Outpost Office Firewall Administrator Guide](#).

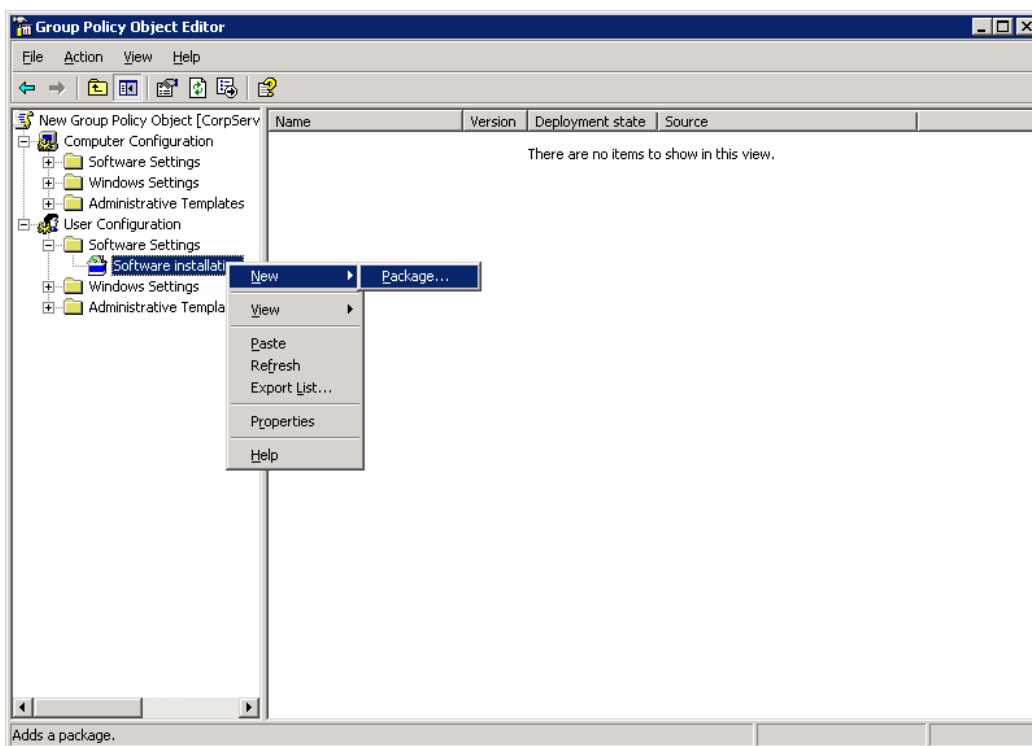
# Table of Contents

<b>Publishing Outpost Client Firewall to User .....</b>	<b>4</b>
<b>Format of the <i>Oofclnt.ini</i> File .....</b>	<b>5</b>
<b>Deploying Outpost Office Firewall to Pre-Windows 2000 Clients .....</b>	<b>6</b>
<b>Deploying Outpost Office Firewall in NT Domain .....</b>	<b>6</b>
<b>Publishing Different Configurations to Different Sets of Computers .....</b>	<b>7</b>
<b>Troubleshooting .....</b>	<b>7</b>

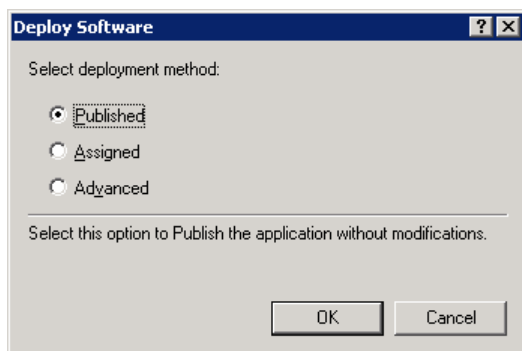
## Publishing Outpost Client Firewall to User

In addition to assigning the installation package to computers in your network, you also have the ability to *publish* it to a specific user even if this user logs onto different computers in the domain. Outpost Firewall will be published (listed in the **Add/Remove Programs > Add New Programs** list) on each computer that user logs onto, essentially following the user across the network and securing his connections wherever he is working. This can be useful for mobile users, for example, who take notebooks on business trips and use desktops in the office.

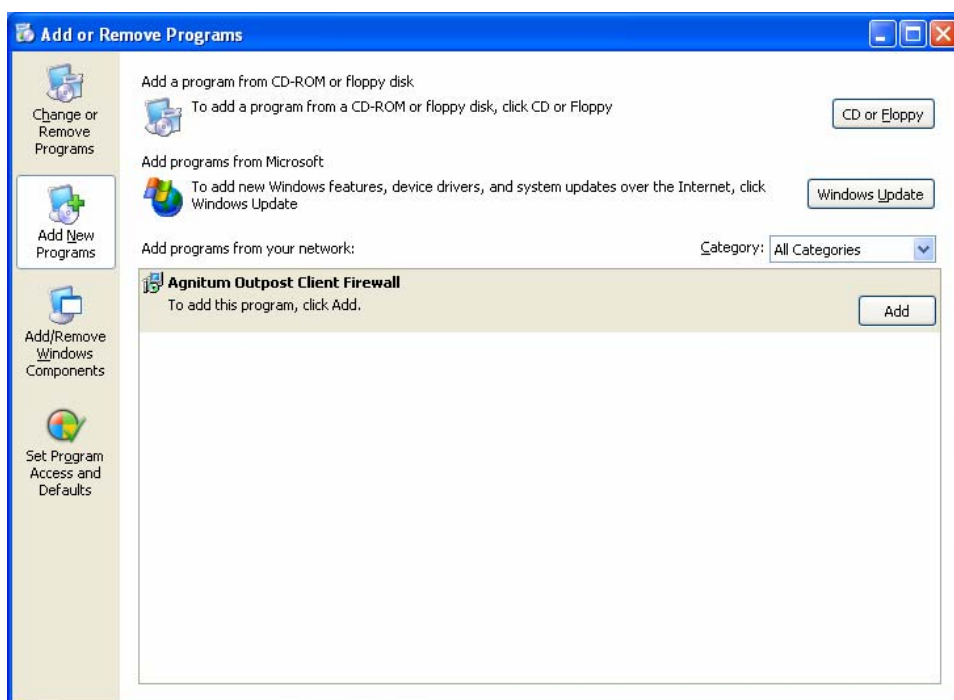
To publish the installation package to users, follow the instructions in the chapter of the [Outpost Office Firewall Administrator Guide](#) titled **Deploying Outpost Client Firewall on the Client Computers** and in the opened GPO select **Software installation** node in **User Configuration > Software Settings**. Right-click the node, select **New > Package** (see image below) to create a new package for the **Software installation** policy, browse to the installation folder (`\\<ConsoleName>\oofc\nt` by default), and select the client firewall setup package.



In the **Deploy Software** dialog box, select **Published**.



You will see the software installation policy record for the selected package in the right pane of the MMC console window. If the GPO is linked to the user, the client firewall setup will be listed in **Add/Remove Programs > Add New Programs** each time the user logs on regardless of which computer he is logging onto.



Linking the GPO to users is performed the same way it is described in the **Linking a GPO** section of the [Outpost Office Firewall Administrator Guide](#).

## Format of the *Oofclnt.ini* File

If stored along with the installation package while installing the client firewall, the **oofclnt.ini** file informs the installation package where the client firewall configuration is stored and which settings it should contain.

The file is stored in **C:\Program Files\Agnitum\Outpost Office Firewall\Command Center\oofclnt** by default and has the following format:

[*cfg\_list*]

<*alias0*>=<path to cfg file>

<*alias1*>=<path to cfg file>

[<*alias0*>]

<*key\_name*>:<type>=<value>

<*key\_name*>:<type>=<value>

[<*alias1*>]

<*key\_name*>:<type>=<value>

<*key\_name*>:<type>=<value>

The following parameters of the server, on which Agnitum Command Center is installed, can be altered in this file:

*corporate\APSAddr:ip* – IP address

*corporate\APSPort:long* – port

Example:

*[cfg\_list]*

*Machine=c:\machine.conf*

*[machine]*

*corporate\APSAddr:ip=192.168.5.9*

*corporate\APSPort:long=801*

## Deploying Outpost Office Firewall to Pre-Windows 2000 Clients

If your network contains any computers that are running pre-Windows 2000 and you want to protect those computers, you can perform the following steps:

1. Copy the **oofclnt.ini** file along with the client installation package to the shared installation folder.
2. Use Windows logon scripts to deploy the client firewall installation package to those client computers.
3. In the logon script, specify the path to the installation package with the **/quiet** key to run Outpost Firewall setup in unattended mode (no dialogs are used, only default settings).

## Deploying Outpost Office Firewall in NT Domain

If your network is running under Windows NT and you want to deploy the Outpost Office Firewall in a Windows NT domain, you can perform the following steps:

1. Install Agnitum Command Center on any workstation running Windows 2000 or later.
2. Copy the **oofclnt.ini** file along with the client installation package to the shared installation folder.
3. Use Windows logon scripts to deploy the client firewall installation package to the client computers.
4. In the logon script, specify the path to the installation package with the **/quiet** key to run Outpost Firewall setup in an unattended mode (no dialogs are used, only default settings).

## Publishing Different Configurations to Different Sets of Computers

If you need to provide different settings to different computers or groups of computers, you can install several instances of Agnitum Command Center in your network and point the computers to the corresponding instance to get the firewall configuration settings.

To do that, copy the **oofclnt.ini** file along with the client installation package to the corresponding shared installation folder before deploying the client firewall to the user computers. This provides for each computer to request its configuration files from the Agnitum Publisher Service it is attached to.

## Troubleshooting

By default, no log is created for the Agnitum Command Center components and client firewall. To troubleshoot the services, Client Configuration Editor, Command Center snap-in, and Outpost Client Firewall on user workstations, you can enable logging on the **Advanced** tab of the Client Configuration Editor or install the product with the following key to enable logging on the console and client computers by default:

*setup.exe /z"debug"*